



T&S BRASS AND BRONZE WORKS, INC.

Reward Hospitality

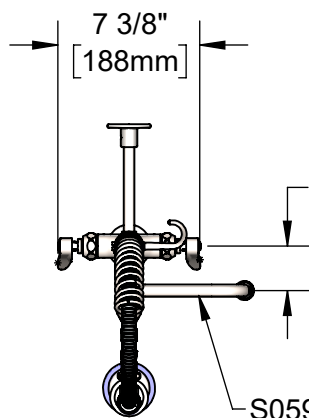
www.rewardhospitality.com.au

Model No.

ASMPK-2DLN-06V20

Item No.

4710022



EVERSTEEL



S059X-V20
Stainless Steel 6" Swing
Nozzle w/ 2.0 GPM Vandal
Resistant Aerator. VR Key
Included

This Space for Architect/Engineer Approval

Job Name _____ Date _____

Model Specified _____ Quantity _____

Customer/Wholesaler _____

Contractor _____

Architect/Engineer _____

Items Not Shown
For Clarity

Stainless Steel
3/8" NPT x 8"
Riser

EasyInstall
Lock Nut &
Bushing

2 5/16"
[58mm]

Ø 2 1/4"
[57mm]
Deck
Flange

6"
[153mm]

12 13/16"
[325mm]

9 5/8"
[245mm]

Stainless Steel Full Turn
Eterna Cartridges w/ Spring
Checks & Stainless Steel Lever
Handles w/ Color Coded Indexes

18" Flexible Stainless Steel
Supply Hoses w/ G1/2 Female
Swivel Fittings (Compatible w/
1/2" NPSM Threads)

24" Flexible
Stainless Steel
Hose w/ Spring
& Spray Valve

S-0107
Stainless Steel
1.15 GPM Spray
Valve

Mounting
Surface

7 7/16"
[189mm]

7 3/8"
[188mm]

Stainless Steel
Finger Hook

S-0109-01
Stainless Steel
6" Wall Bracket

Stainless Steel
EasyInstall Add-On
Faucet w/ Full Turn
Eterna Cartridge &
Lever Handle

24 13/16"
[630mm]

1 15/16"
[48mm]
Maximum
Thickness

Rough-In Requirement:
Ø 1 1/2" [38mm] Mounting Hole

Product Specifications:

Pre-Rinse Unit: EasyInstall Stainless Steel Single Hole Deck Mount Mixing Faucet, SS Full Turn Eterna Cartridges w/ Spring Checks, SS Lever Handles, SS Add-On Faucet, SS 6" Swing Nozzle w/ 2.0 GPM VR Aerator, 24" Flexible Stainless Steel Hose, SS 1.15 GPM Spray Valve, SS 6" Wall Bracket & Flexible Stainless Steel Supply Hoses

Product Compliance:

ASME A112.18.1 / CSA B125.1
NSF 61 - Section 9
NSF 372 (Low Lead Content)
AS/NZ WaterMark / WELS
For Commercial Use Only



**Reward
Hospitality**

T&S BRASS AND BRONZE WORKS, INC.

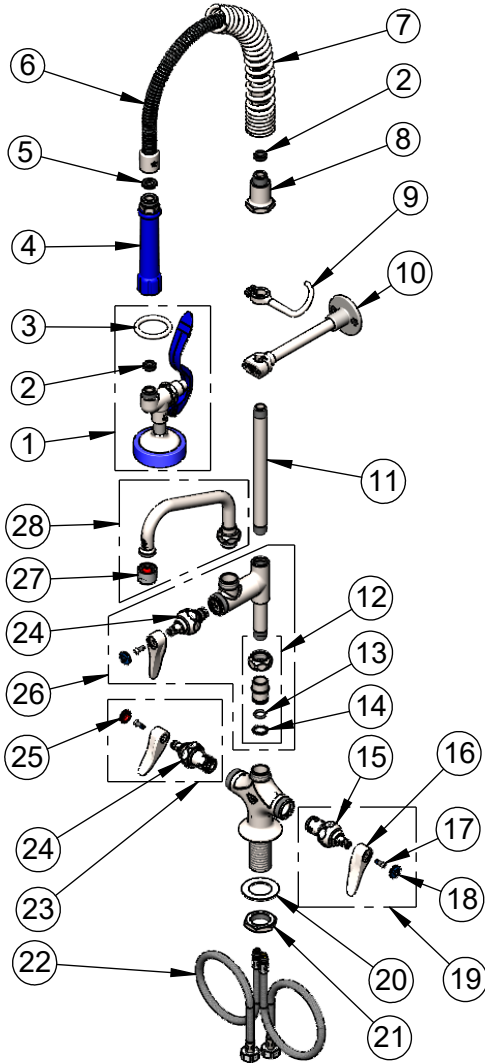
www.rewardhospitality.com.au

Model No.

ASMPK-2DLN-06V20

Item No.

4710022



015425-45
Vandal Resistant Key
(Included)

ITEM NO.	SALES NO.	DESCRIPTION
1	S-0107	Stainless Steel 1.15 GPM Spray Valve (Blue)
2	010476-45	#27 Washer
3	S000907-30	Spray Valve Hold Down Ring
4	S011482-30	Stainless Steel Grip Handle (Blue)
5	001014-45	Washer, Hose Barrel
6	S-0024-H2A	24" Flexible Stainless Steel Hose, Less Handle
7	S016795-30	Stainless Steel Compact Spring
8	S000821-30	Stainless Steel Spring Body
9	S004R	Stainless Steel Finger Hook
10	S-0109-01	Stainless Steel 6" Wall Bracket
11	S078X	Stainless Steel 3/8" NPT x 8" Riser
12	SEZ-K	Stainless Steel EasyInstall Kit w/ Nut, Bushing, O-ring & Lock Washer
13	001065-45	O-Ring
14	014200-45	Star Washer, Anti-Rotation
15	S012442-30FT	Stainless Steel Full Turn Eterna Cartridge w/ Spring Check, LTC
16	S001638-30NS	Lever Handle (New Style)
17	000925-45	Lab Handle Screw
18	018506-19NS	Blue Button Index, Press-in
19	S002711-30FT	Stainless Steel Full Turn Eterna Cartridge w/ Spring Check, Handle, Blue Index & Screw, LTC
20	S007365-20	Stainless Steel Lock Washer
21	S000965-45	Stainless Steel Lock Nut
22	012436-45DR	Flexible Connector Hose
23	S002712-30FT	Stainless Steel Full Turn Eterna Cartridge w/ Spring Check, Handle, Red Index & Screw, RTC
24	S012443-30FT	Stainless Steel Full Turn Eterna Cartridge w/ Spring Check, RTC
25	001193-19NS	Red Button Index, Press-in
26	AS-0155-LNEZ	Stainless Steel EasyInstall Add-On Faucet w/ Full Turn Eterna Cartridge & Lever Handle, Less Nozzle
27	S-0199-06-F20	VR 2.0 GPM [7.6 L/min] Aerator, 55/64-27 Female w/ Key
28	S059X-V20	Stainless Steel 6" Swing Nozzle

Product Specifications:

Pre-Rinse Unit: EasyInstall Stainless Steel Single Hole Deck Mount Mixing Faucet, SS Full Turn Eterna Cartridges w/ Spring Checks, SS Lever Handles, SS Add-On Faucet, SS 6" Swing Nozzle w/ 2.0 GPM VR Aerator, 24" Flexible Stainless Steel Hose, SS 1.15 GPM Spray Valve, SS 6" Wall Bracket & Flexible Stainless Steel Supply Hoses

Product Compliance:

ASME A112.18.1 / CSA B125.1
NSF 61 - Section 9
NSF 372 (Low Lead Content)
AS/NZ WaterMark / WELS
For Commercial Use Only